

MRTool

a SPM-based toolbox for structural MR imaging analyses

Ganzetti M., Mantini D.

KU Leuven, Movement Control & Neuroplasticity Research Group, Leuven, Belgium

KU LEUVEN

OVERVIEW

In view of the increasing availability of MR imaging data for clinical investigations, we introduce MRTool, a comprehensive collection of analysis tools in the form of a SPM12 plugin toolbox.

At the current stage, it consists of four modules (Fig. 1).

'**T1-w/T2-w image**' for the generation of the multimodal ratio image (1). '**Optimized Bias Correction parameters**' for the definition of the optimal set of input parameters (regularization and FWHM) required during the bias correction of MR images in SPM12 (2). '**Brain Extraction**' for the generation of skull-stripped images (3). '**Optimized Normalization**' for an enhanced spatial registration and segmentation of elderly subjects characterized by a marked ventricular enlargement and advanced atrophy (4).

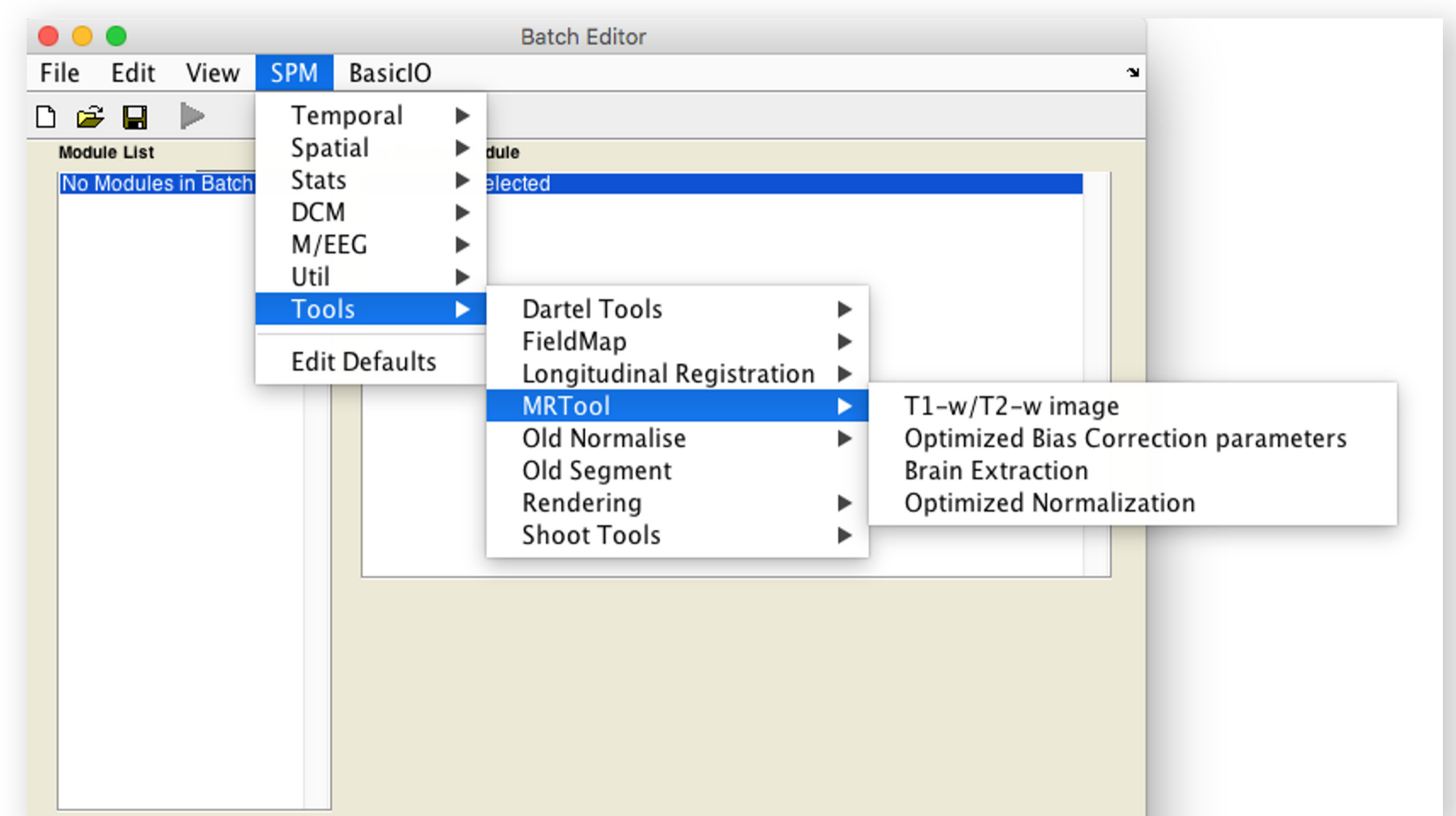
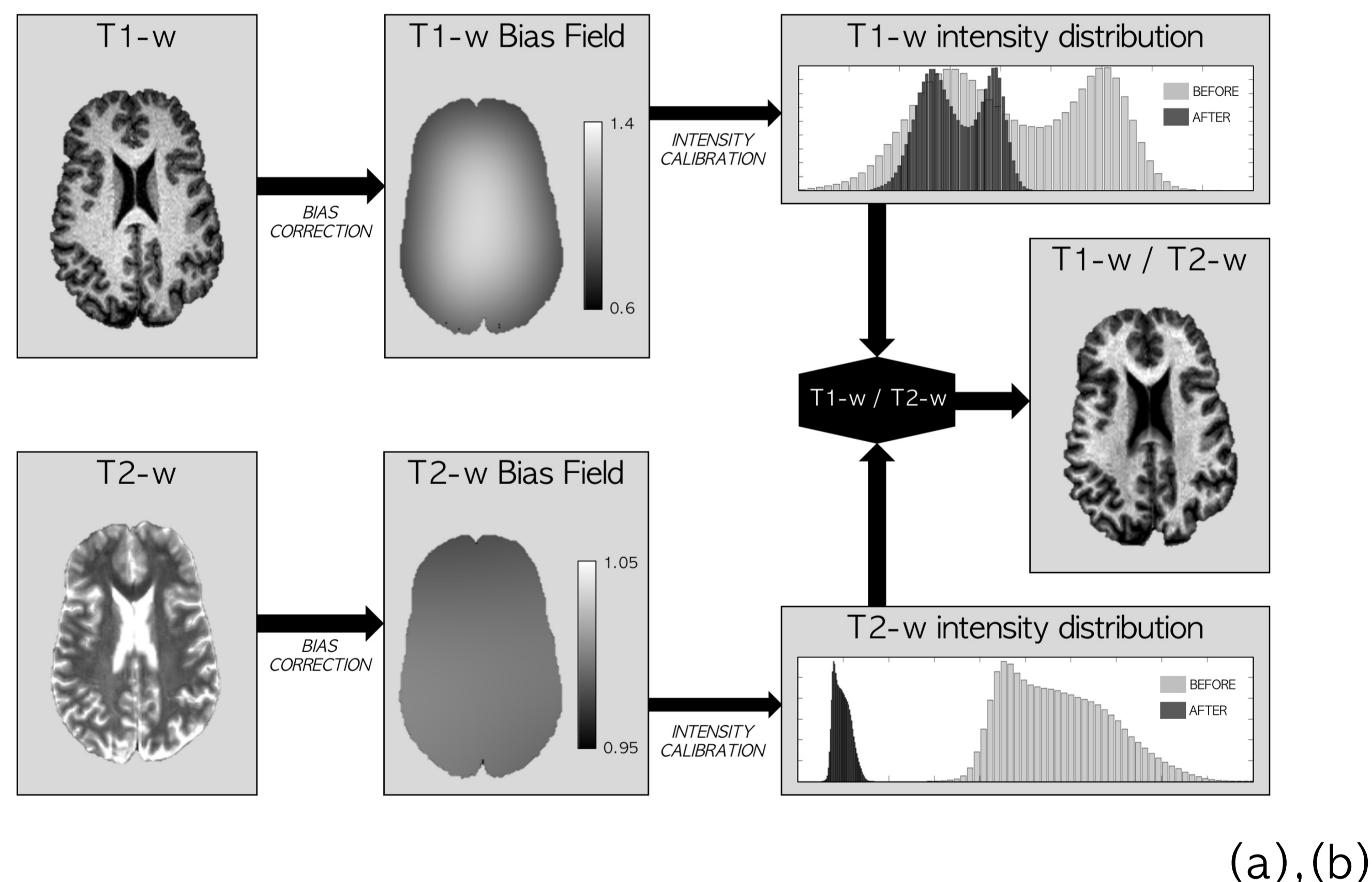
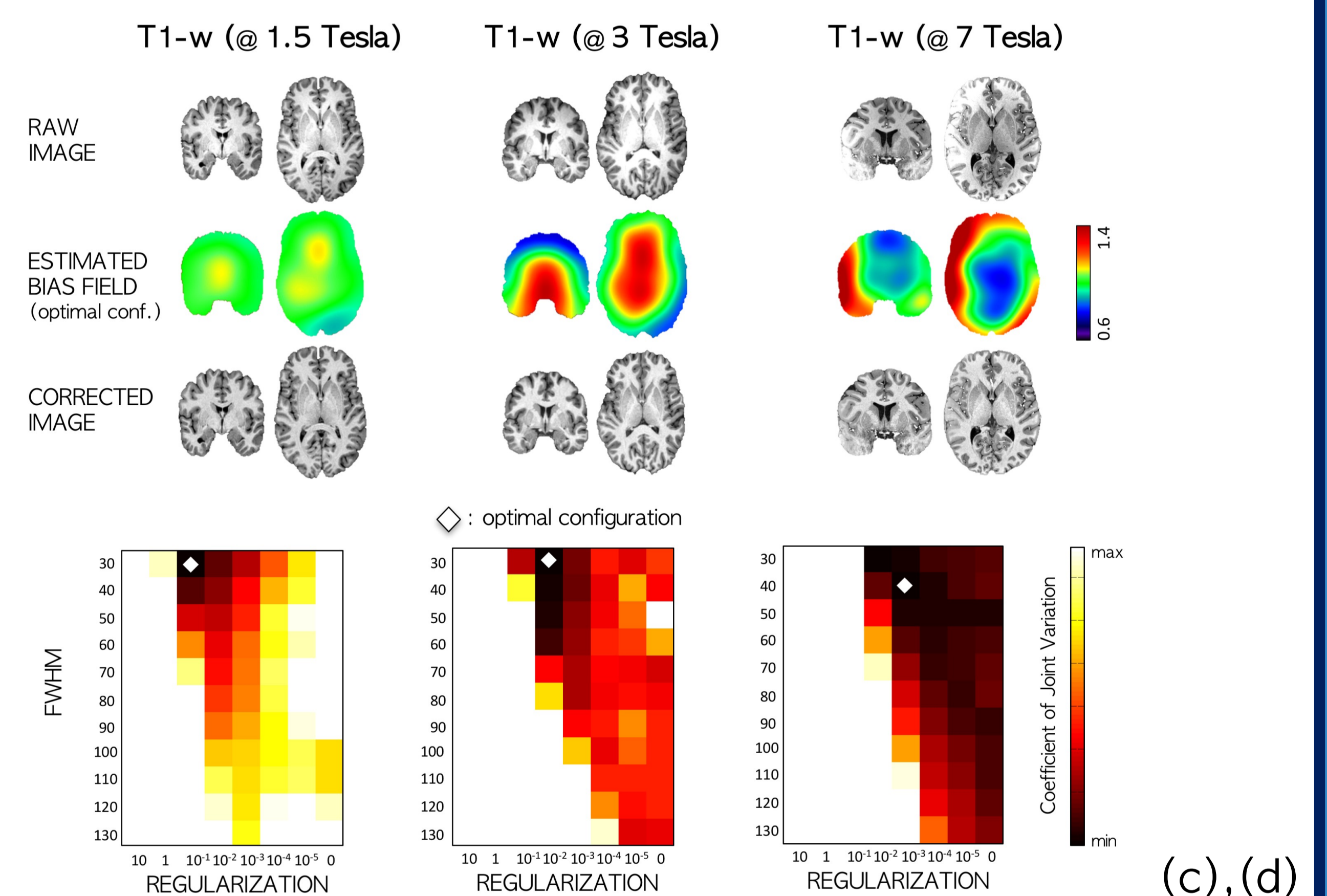


FIG. 1 – Batch editor of SPM12

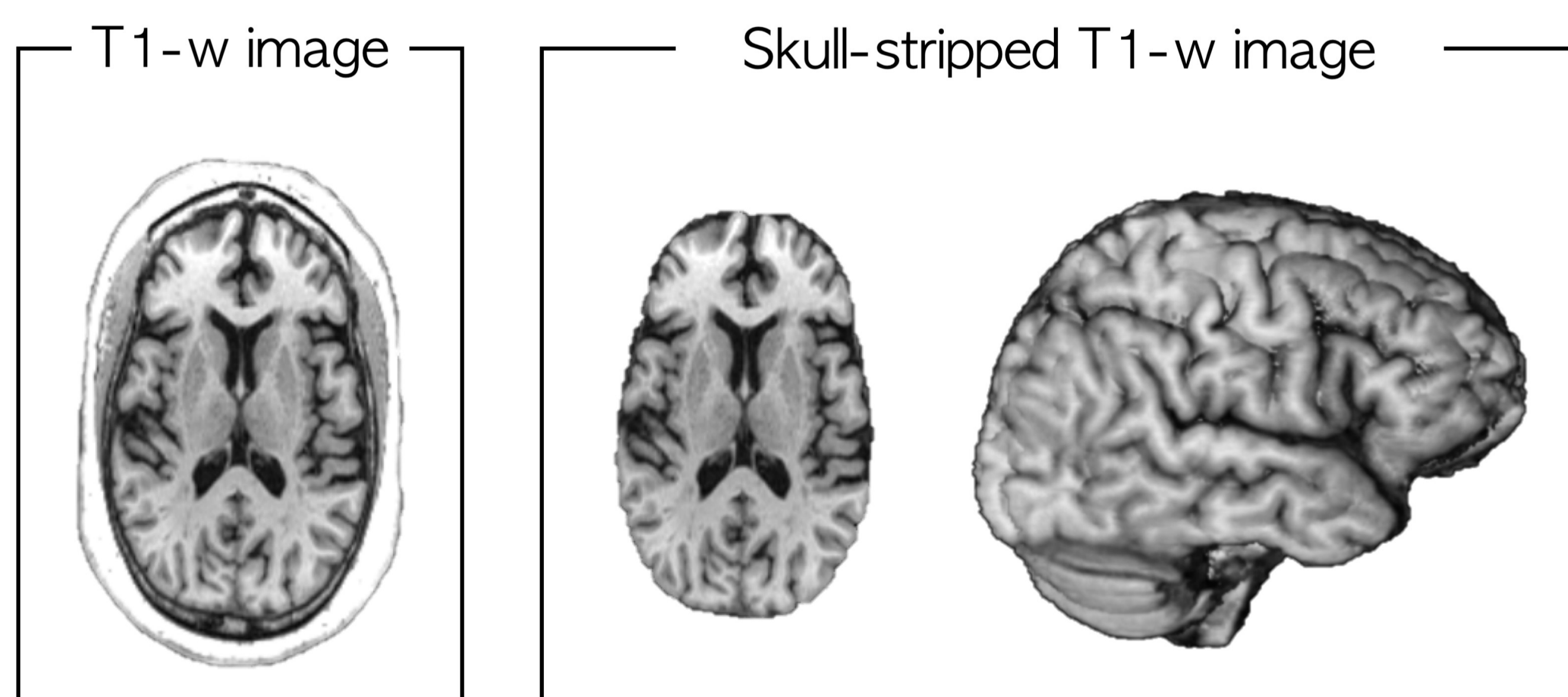
T1-w/T2-w image (1)



Optimized Bias Correction parameters (2)

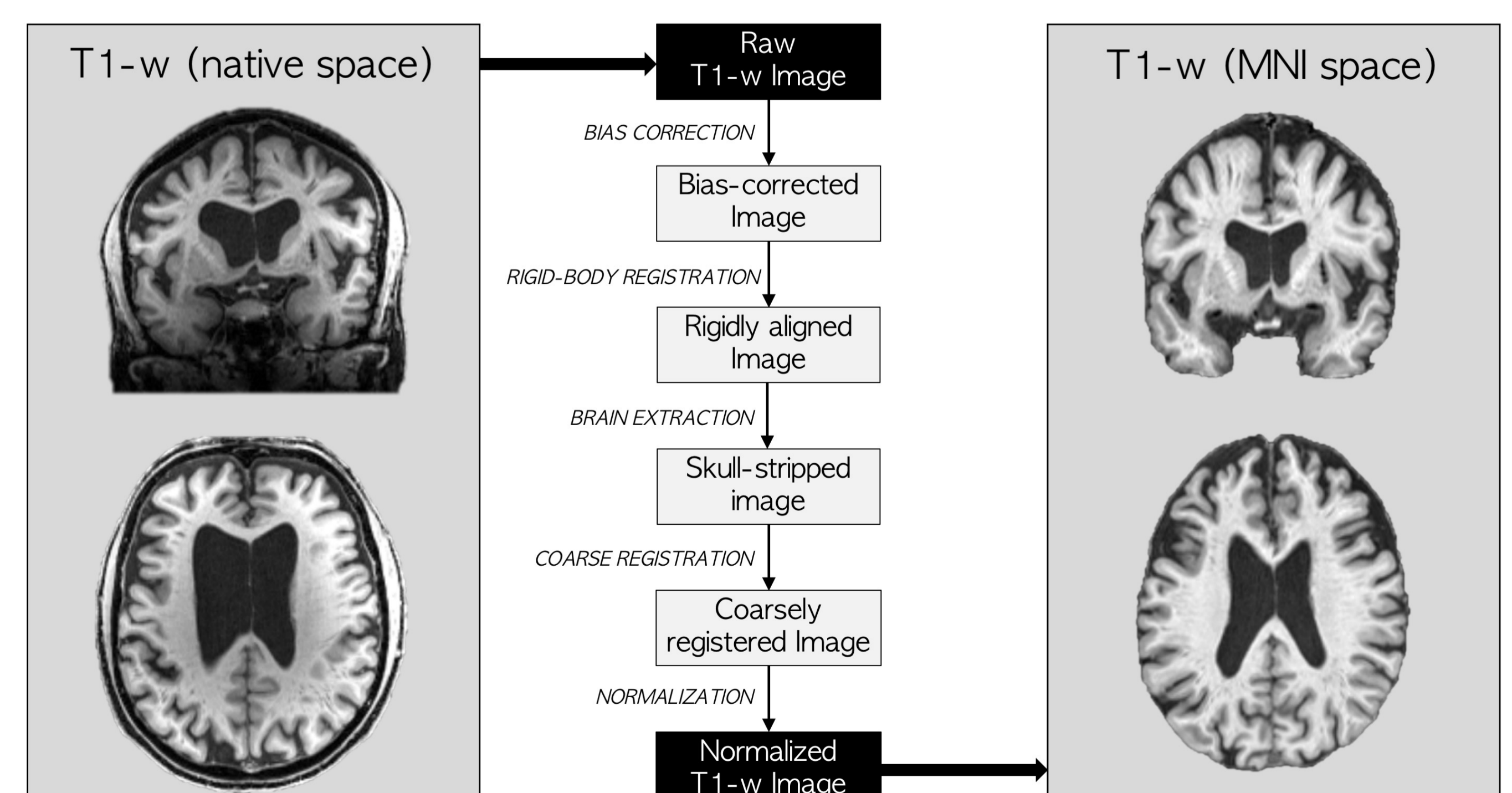


Brain Extraction (3)



NEW RELEASE

Optimized Normalization (4)



.... for more information, please see poster 3782

- (a) Ganzetti et al. 2014 – Frontiers in Human Neuroscience
- (b) Ganzetti et al. 2015 - Neuroradiology
- (c) Ganzetti et al. 2016 – Frontiers in Neuroinformatics
- (d) Ganzetti et al. 2016 - Neuroinformatics

MRTool 1.4.1 : www.nitrc.org/projects/mrtool
@: marco.ganzetti@kuleuven.be

